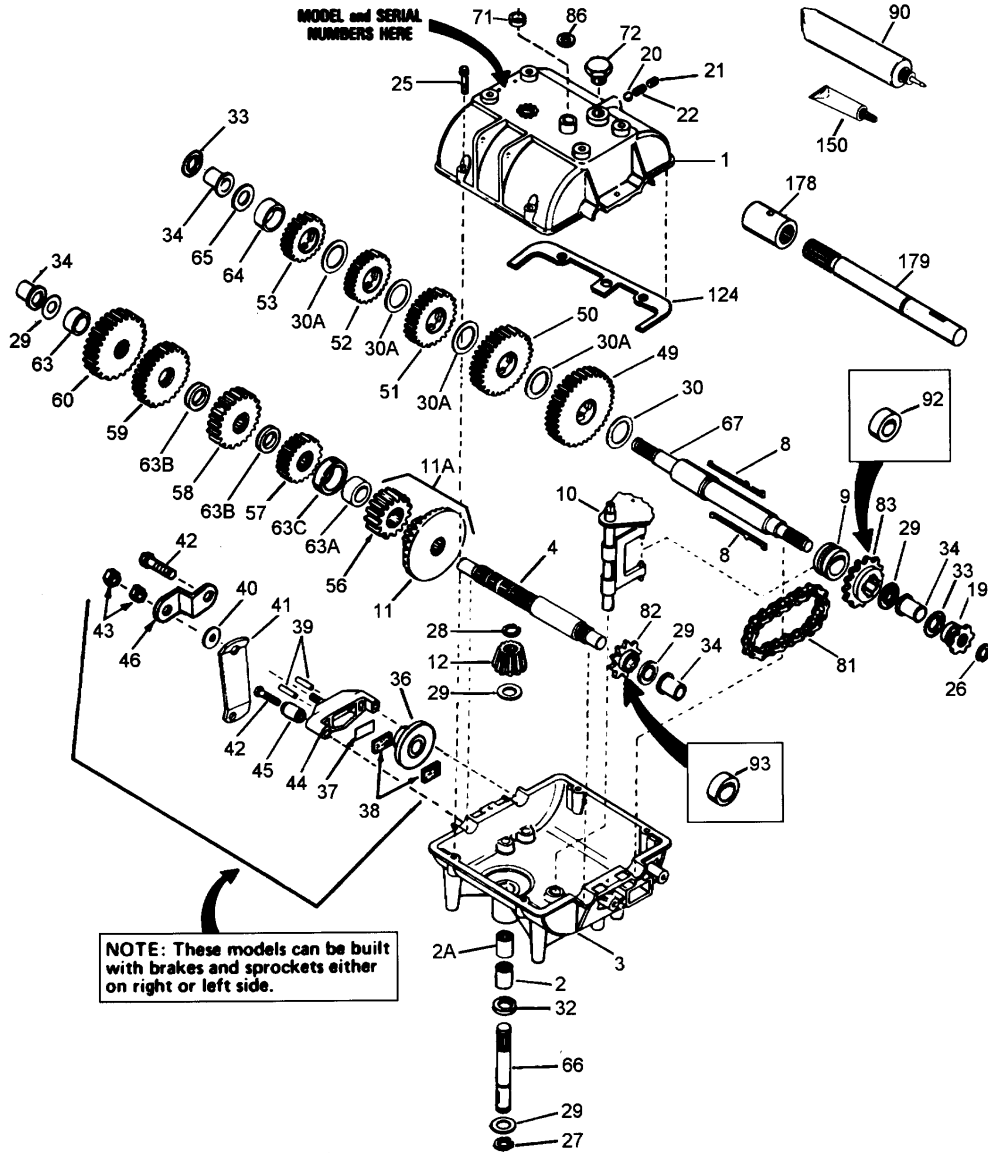


p700.2 700-700-132 / Transmission

ILLUSTRATION SHOWS TYPICAL PARTS ONLY. ORDER BY PART NUMBER. PARTS NOT LISTED ARE SUPPLIED BY OEM.



Part List

p700.2 700-700-132 / Transmission

REF #	ITEM #	DESCRIPTION	QTY	REMARK
1	772083A	Transmission Cover	1	
2	780086A	Needle Bearing	1	
2A	780142	Needle Bearing	1	
3	770061A	Transmission Case	1	
4	776134	Countershaft	1	
8	792089A	Key	4	
9	784266	Collar	1	
10	784267	Shift Rod & Fork	1	
11	778154	Bevel Gear (42 teeth-steel)	1	
12	778153	Input Bevel Pinion (steel)	1	
19	786047	Sprocket (8 teeth)	1	
20	792077A	Steel Ball, 5/16"	1	
21	792078	Set Screw, 3/8-16 x 3/8"	1	
22	792079	Spring	1	
25	792073A	Screw, 1/4-20 x 1-1/4"	6	
26	792072	Retaining Ring	1	
27	792035	Retaining Ring	1	
28	788040	Retaining Ring	1	
29	780072	Thrust Race	5	
30	780108	Thrust Washer (1/16" thick)	5	
30A	780108	Thrust Washer (1/16" thick)	1	
32	792001	"O" Ring	2	
34	780105A	Flange Bushing	4	
49	778125	Spur Gear (35 teeth)	1	
50	778124A	Spur Gear (30 teeth)	1	
50	778206A	SPUR GEAR 35T STL IC	1	
51	778123A	Spur Gear (25 teeth)	1	
52	778122A	Spur Gear (22 teeth)	1	
53	778121A	Spur Gear (20 teeth)	1	
56	778136	Spur Gear	1	(15 teeth) NOTE: Gear 778136 was used as a spacer on the following: Models704,A,B, 716, 719,A,B, 743, 766,A, 785,A, 799
57	778126A	Spur Gear (20 teeth)	1	
58	778127A	Spur Gear (25 teeth)	1	
59	778128A	Spur Gear (28 teeth)	1	
60	778129A	Spur Gear (30 teeth)	1	
65	780109	Washer	1	
66	776135	Input Shaft (3-11/16" long)	1	
67	776217	Output & Brake Shaft	1	(8-13/16" long) (Shaft has four keyways and replaces shafts with two keyways. Use four keys)
71	788069	Square Cut Seal	1	
72	792074	Threaded Plug	1	
81	786081	Roller Chain (No. 41 chain, 24 links)	1	
82	786082	Sprocket (9 teeth)	1	
83	786083	Sprocket (18 teeth)	1	
86	792083	Washer (Use as required)	1	
90	788067C	Grease (Bentonite)	1	
150	510334	Gasket Eliminator (Loctite No. 515)	1	
150	788093A	Liquid Gasket RTV Silicon	1	